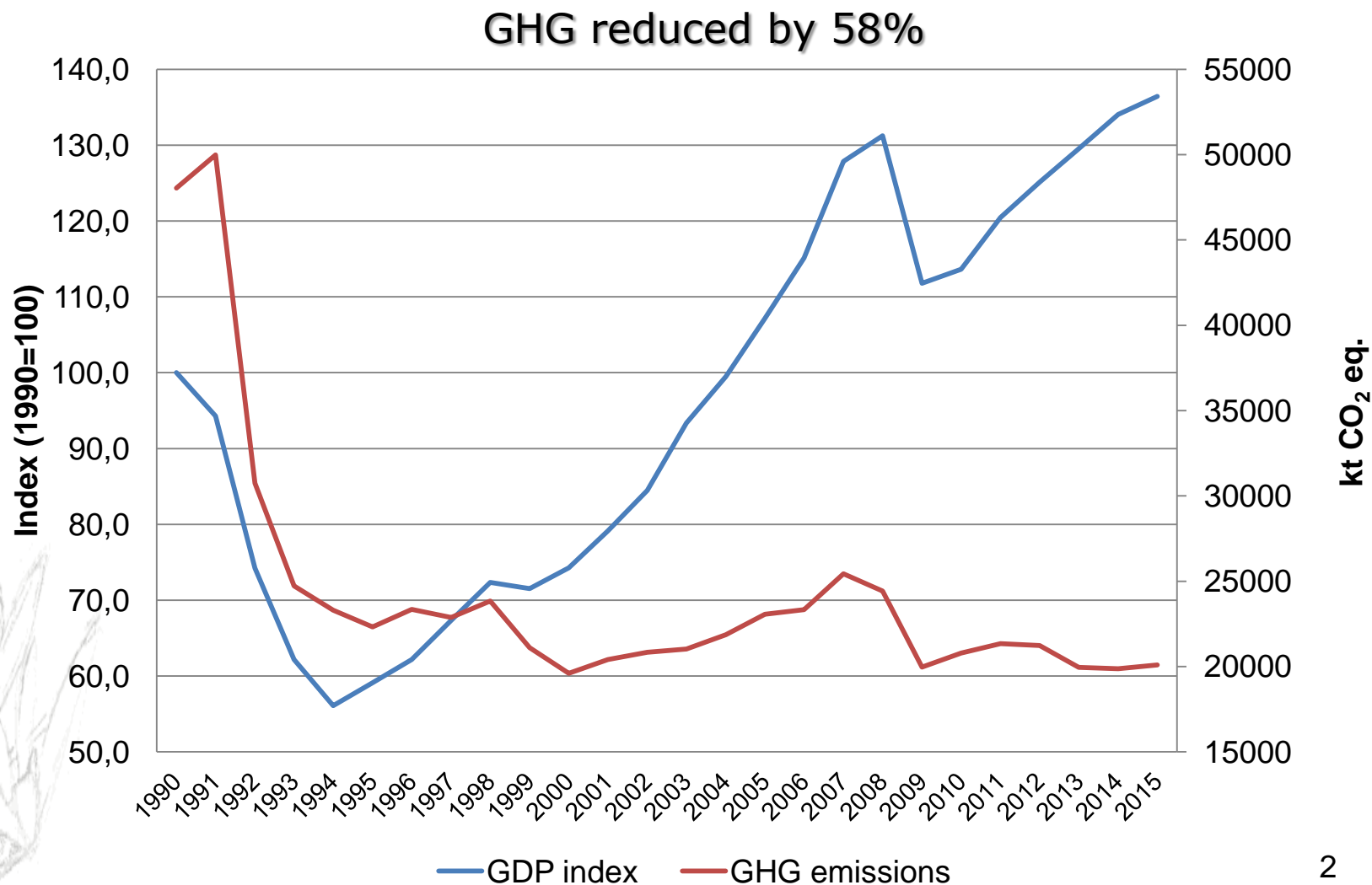




Lithuania's transition towards low carbon and climate resilient development



Achievements: Changes of GDP and GHG emission index in Lithuania





Current Lithuania's key policies and measures

Climate change key policies and measures

Strategy for the National Climate Change Management Policy by 2050 (2012)

sets climate change mitigation and adaptation legally binding short-term (by 2020) and indicative mid-term (by 2030 and 2040) and long-term (by 2050) targets and objectives, **aiming that Lithuania will contribute towards the implementation of the EU GHG reduction targets.**

Action Plan on the Implementation of the Goals and Objectives for 2013-2020 of the Strategy for the National Climate Change Management Policy (2013)

Cross-cutting policies and measures

National Reform Programme (2011)

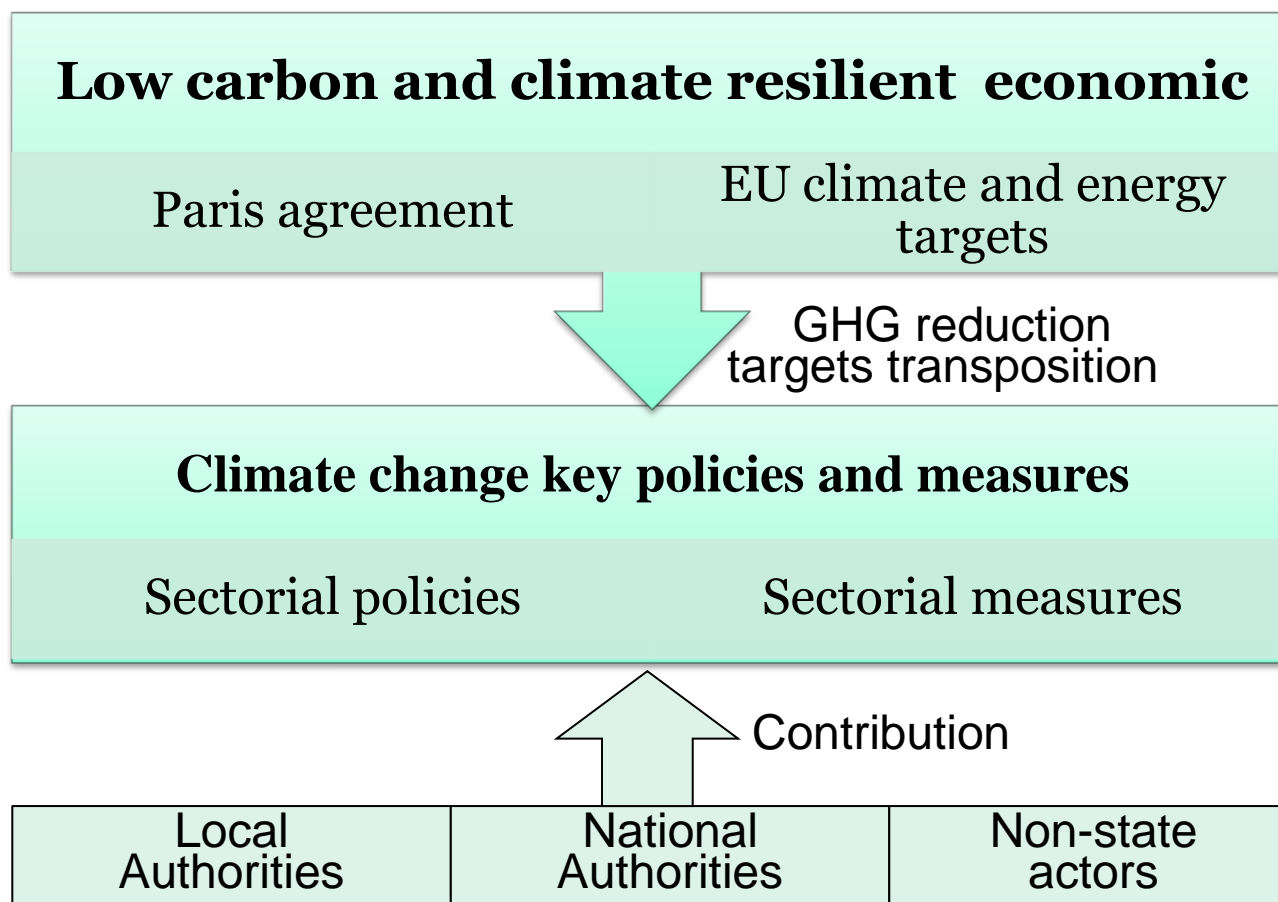
National Sustainable Development Strategy (2003, 2011)

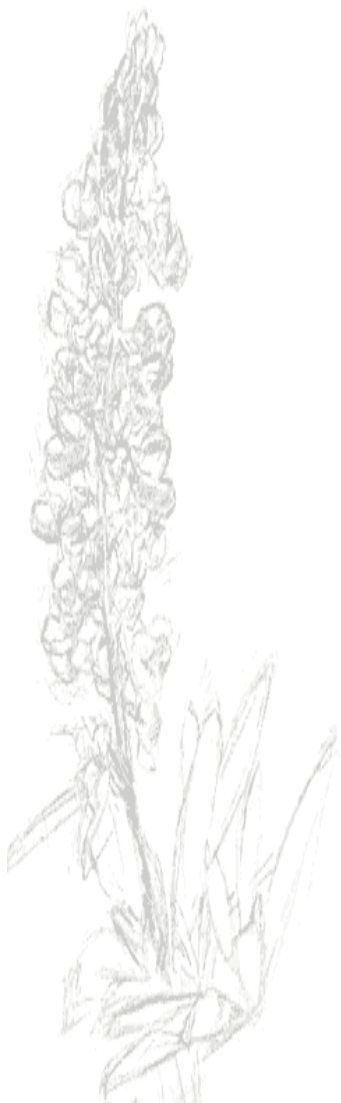
National Progress Programme (2012)

Sectorial policies and measures in energy, buildings, transport, industry, agriculture, forestry, waste management



Possible way forward: Lithuania's transition towards low carbon and climate resilient development





An aerial photograph showing a wide river with a brownish hue, likely from sediment, winding through a vast, green forested landscape. The river forms a large loop in the center of the frame. The surrounding land is a mix of dense forest and open green fields. The sky is clear and bright.

Ministry of Environment of the Republic of Lithuania
<http://www.am.lt>